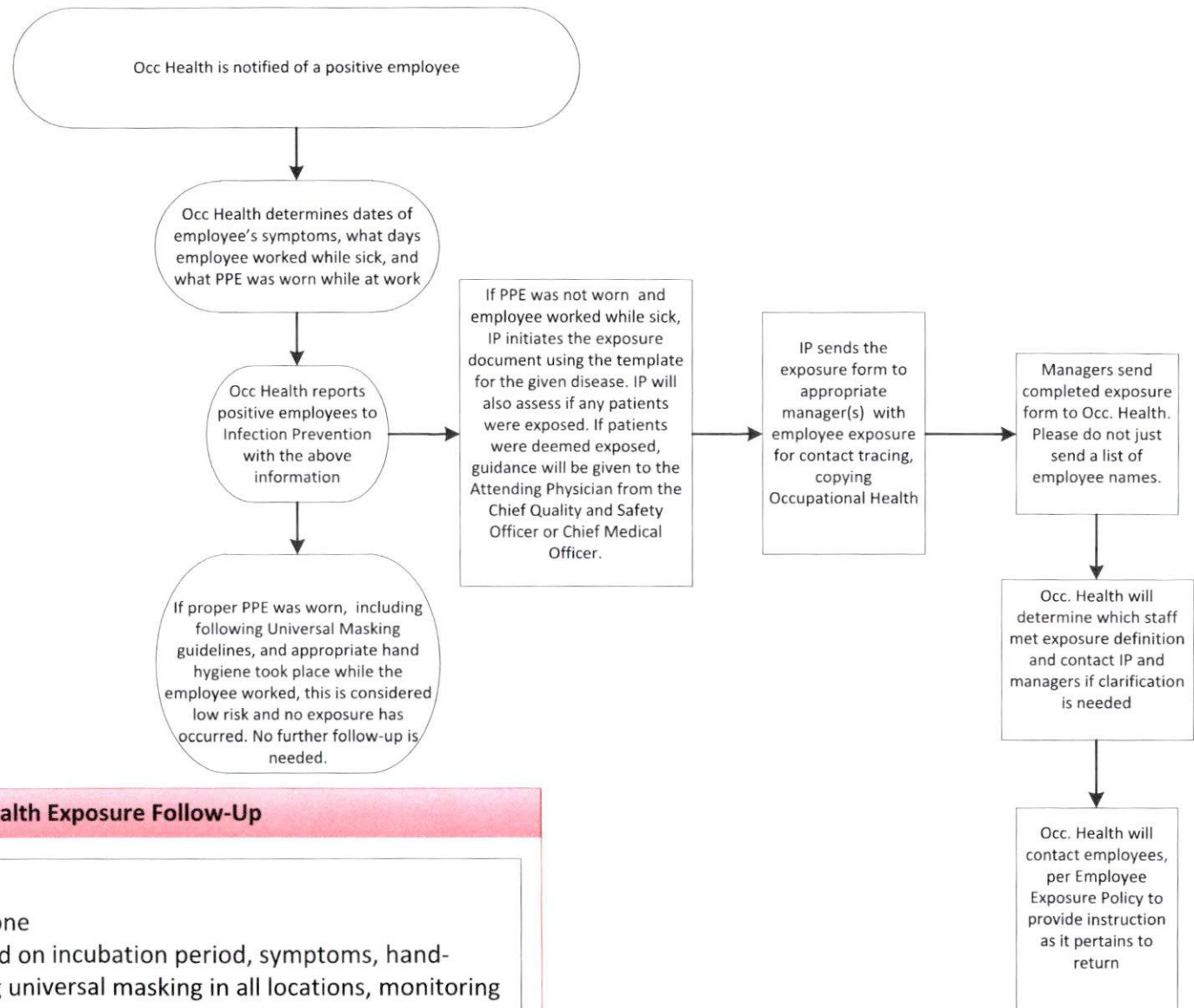


# Positive Employee Exposure Workflow



## Occupational Health Exposure Follow-Up

- Employees will be contacted by phone
- For Covid-19, employees are advised on incubation period, symptoms, hand-hygiene, social distancing, following universal masking in all locations, monitoring symptoms via the patient portal, and instructions not to come to work while sick.
- Employees are not required to self-isolate.
- Occupational Health will instruct employees to enter an incident report if a true exposure has occurred